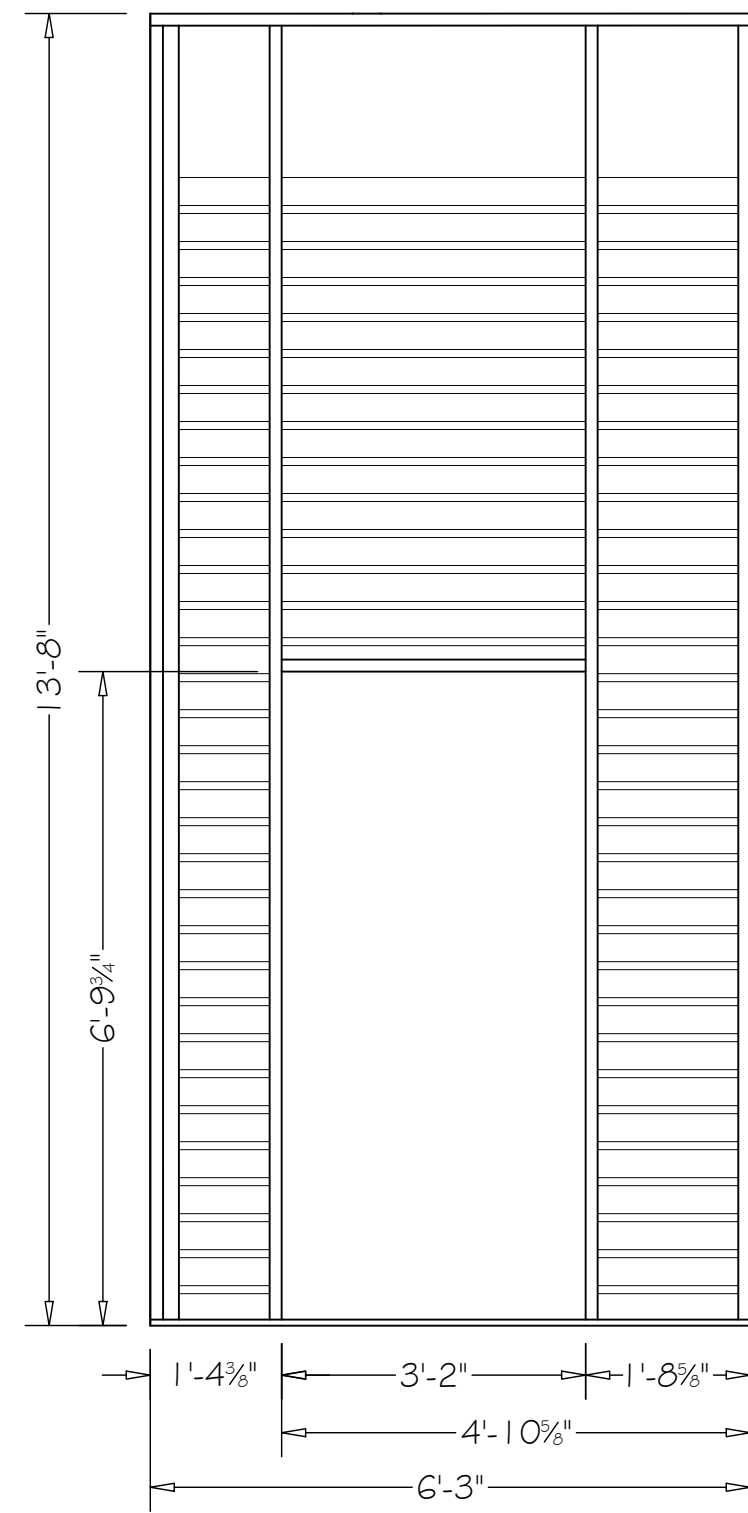
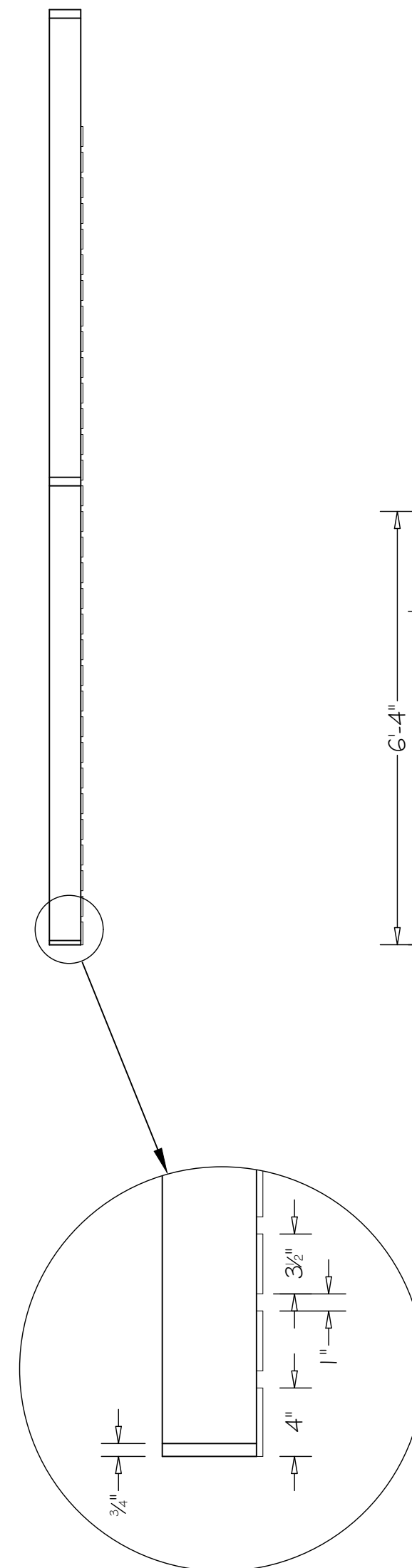


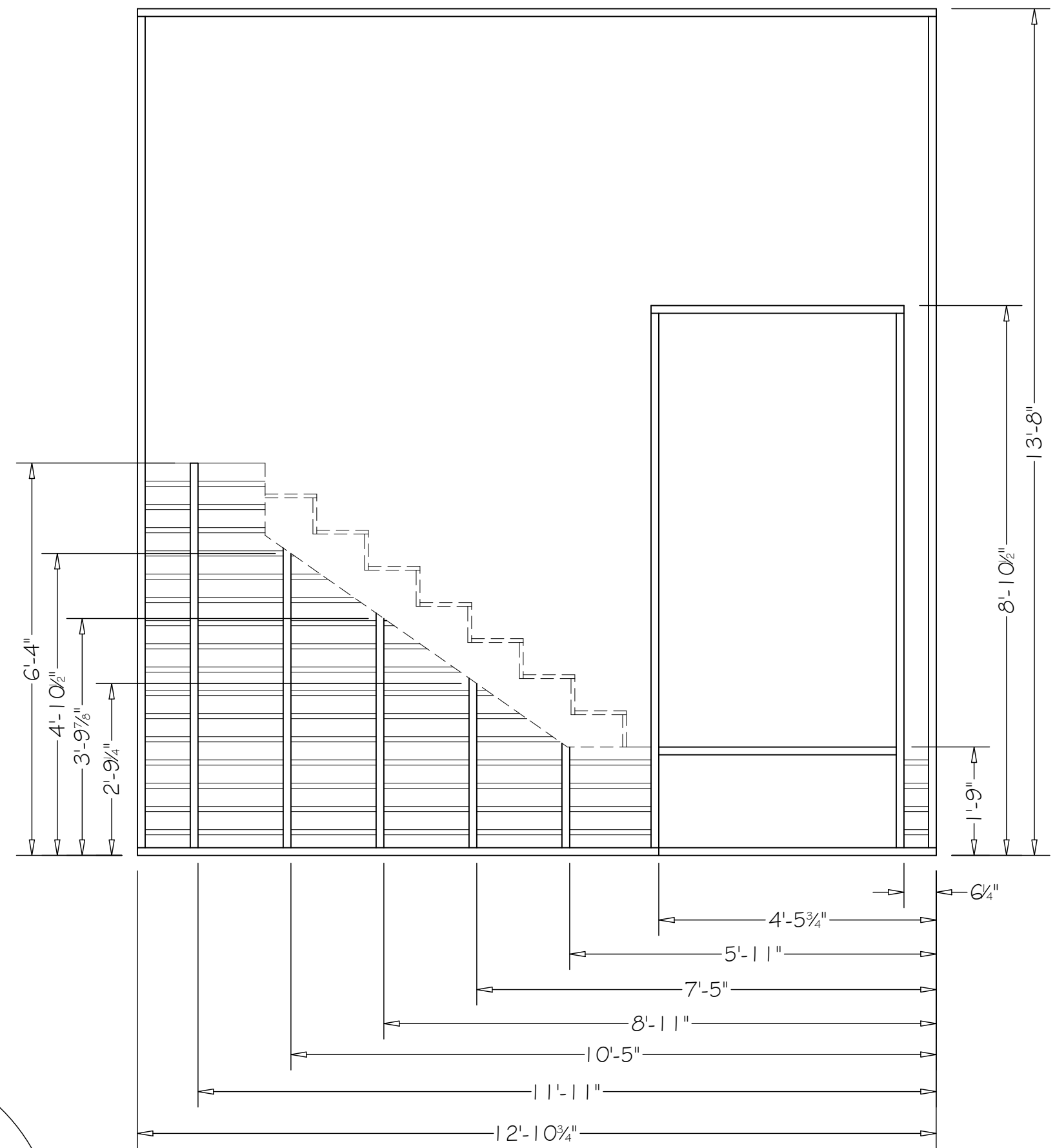
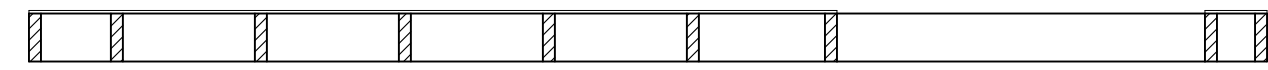
Flat 'B'
 Typical Hollywood Flat construction
 Front view with skin removed
 Note detail for miter
 Glue and staple all joints
 Skin with luan
 Fill and sand staple holes and joints



Flat 'C'
 Construction from 1x6 & 2x6
 Front view with skin removed
 Scrim will be added to front
 3/8" Ply "Lath" applied to the back
 Some areas of lath can be broken out/missing



Detail 1/2" = 1'-0": Typical application of lath to similar walls



Flat 'D'
 Front view with skin removed
 Similar construction as 'C'
 Unit will need to be assembled in the Dudley
 Framing members can be painted in advance???

University of Minnesota-Duluth Dept. of Theatre	
Buried Child	
Flats B - D	
Designer: Ashley Wereley	
T.D.: Scott M. Boyle	
Scale: 1/2" = 1'-0"	Date: 2-11-14